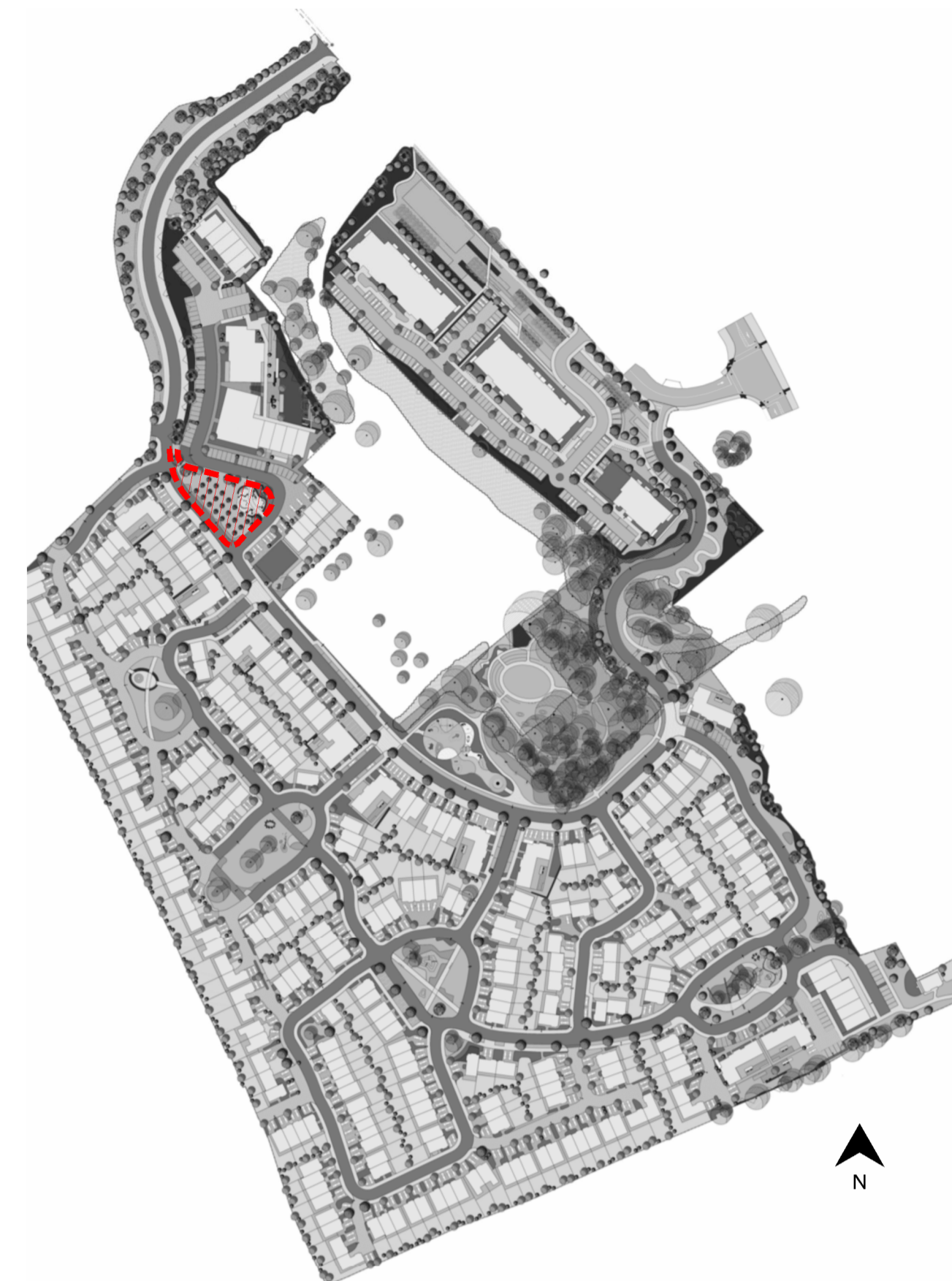




LEGEND:
NOTE: for details of materials & planting see drawing 18221-2-103

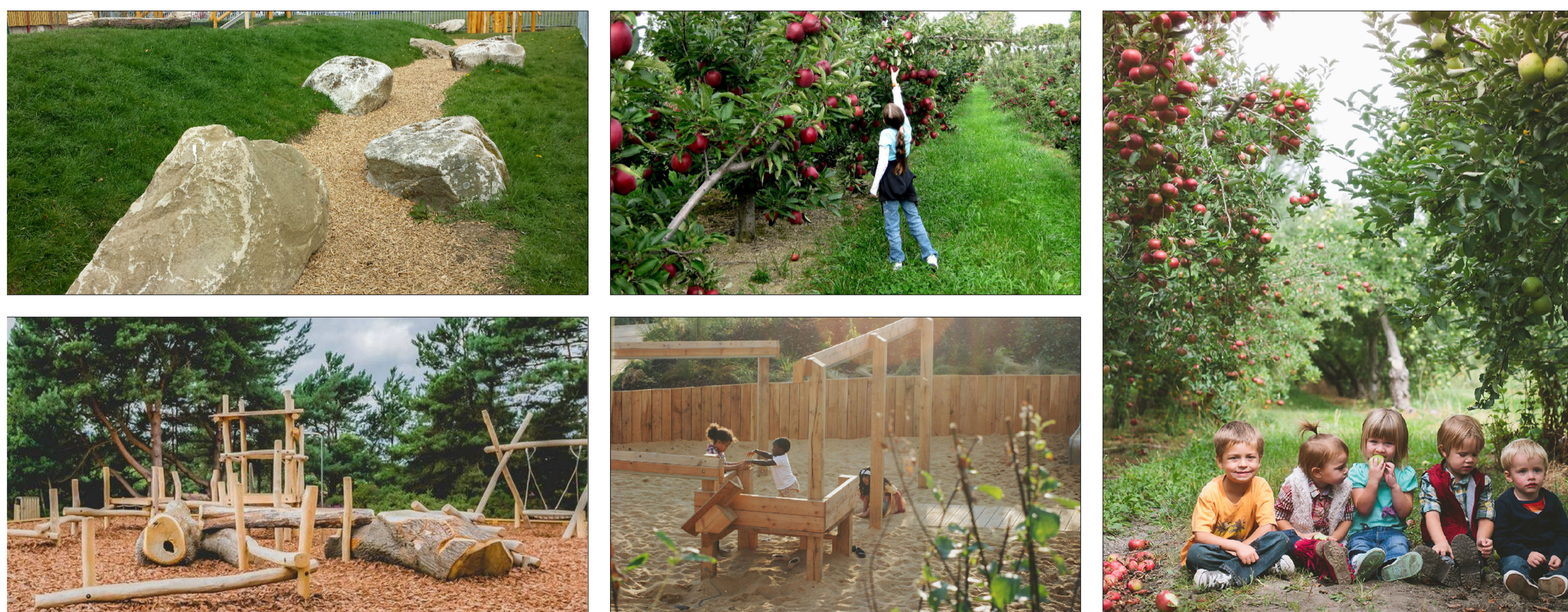
- GENERAL
- Existing Trees/Group of Trees
 - Proposed Building
- PROPOSED PLANTING AND HABITATS
- Parkland Trees
 - Street Trees
 - Small to Medium Garden Trees
 - Orchard Trees
 - Birch Thickets
 - Amenity / Private Grass
 - Low / Medium height shrub Planting
 - Hedge
 - Mixed Native Woodland Planting
 - Ornamental Grasses + Planting
 - Bulb Planting / Long grass
 - Landform
 - Swale
- PROPOSED HARD ELEMENTS
- Tarmac Road
 - Concrete Footpath
 - Raised Table
- Tactile Paving
- Rolled Dust/Gravel Path
- PCC Pavers for Vehicular/Pedestrian
- Shared surface-Coloured tarmac
- Cycle way
- Parking Bay and Threshold Paving
- PCC setts
- Attenuation area
- 1.2m high vertical bar railing
- PROPOSED PLAY AREAS
- Rubber / Woodchip Play surface
 - Sand area in Playground
 - Boardwalk Play Features
 - Balance Beams
 - Informal Play: Boulders, Mounds, Logs
 - Play Equipment
 - Fitness Trail Equipment
- PROPOSED FURNITURE & STRUCTURES
- Coursed gabion retaining walls
 - 1. Bike Stands
 - 2. Bin Shed
 - 3. Bins
 - Indicative location of substation unit
 - Street Lighting
 - Pumping station



KEY PLAN NTS

School Hill Green
School Hill Green is located opposite a proposed creche, opposite the proposed school and at the top of the hill. It includes a local play area and community orchard for use by residents and the creche. There is a generous entrance space to the northwest of the pocket park welcoming people into the park while bulb planting provides a buffer between the park and the avenue.

SCHOOL HILL GREEN, PLAN VIEW
SC. 1:200



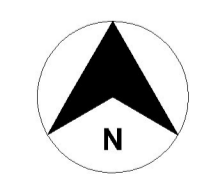
SCHOOL HILL GREEN, INDICATIVE IMAGES

NOTE:
- DRAWING ISSUED FOR PLANNING PURPOSE ONLY.
LANDSCAPE IS SUBJECT TO APPROVAL OF THE PLANNING AUTHORITY

REV	DATE	AMENDMENT
A	14/11/2019	PLANNING ISSUE

CUNNANE STRATTON REYNOLDS
LAND PLANNING & DESIGN

DUBLIN OFFICE
3 MOLESWORTH PLACE DUBLIN 2
TEL 01 661 0419 FAX 01 661 0431
EMAIL info@csrlandplan.ie



PROJECT: BELMOUNT RESIDENTIAL DEVELOPMENT ACADEMY STREET, NAVAN, CO MEATH	DATE: October 2019
DRAWING: LANDSCAPE MASTERPLAN DETAIL: SCHOOL HILL GREEN	SCALE: 1/200@A1
	DRAWN: DC
	CHECKED: EO
	DRAWING NO: 18221-2-407